



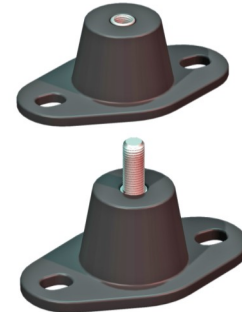
# SB/SH-Mounting

type 10-SB/SH

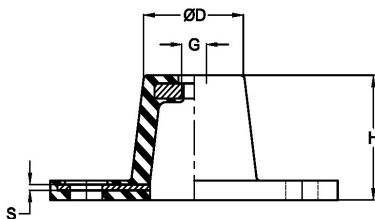
Max. 200 kg - 7 mm - 6 Hz

**SB/SH-Mountings** are compact anti-vibration mountings. These mountings are easy to install and offer a high level of insulation due to its low horizontal and vertical stiffness. SB/SH-Mountings are available in various dimensions and rubber mixes. For the selection of these mountings we advise you to consult our engineers.

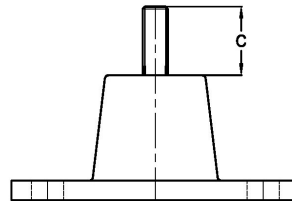
Applications: electronic equipment, small pumps, compressor sets, cooling equipment, etc.



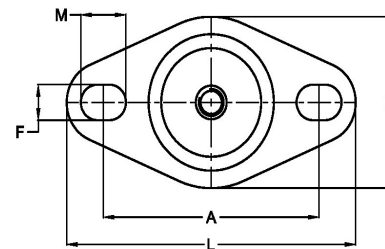
SIDE-VIEW type SH



SIDE-VIEW type SB

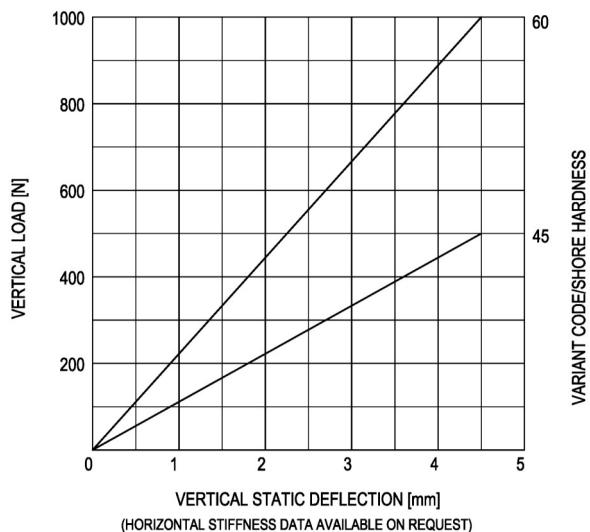


TOP-VIEW



Standard Type	Dimensions									
	L (mm)	H (mm)	B (mm)	A (mm)	C (mm)	D (mm)	G (mm)	S (mm)	F (mm)	M (mm)
10-SB-100-A	90	25	55	67	20	30	M-8	1,5	13	9
10-SH-100-A	90	25	55	67	-	30	M-8	1,5	13	9
10-SB-200-A	90	35	55	67	20	40	M-8	1,5	13	9
10-SH-200-A	90	35	55	67	-	40	M-8	1,5	13	9

LOAD CHARACTERISTICS SB/SH-100-A



LOAD CHARACTERISTICS SB/SH-200-A

